

# ABBREVIATIONS

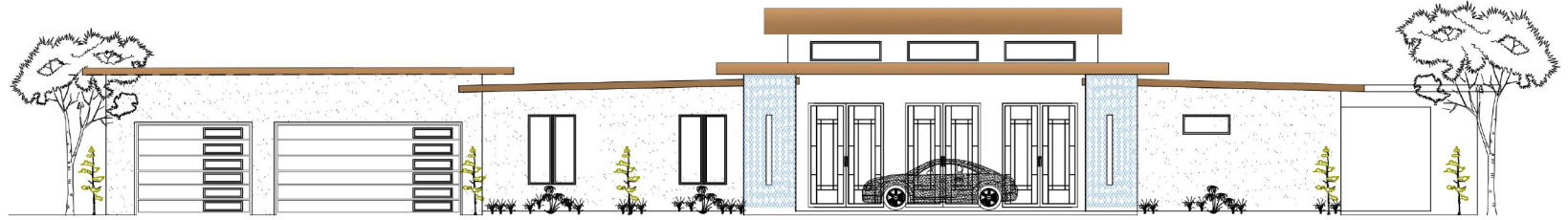
- ARCH - ARCHITECTURAL
- B - BOTTOM
- BLDG - BUILDING
- BM - BEAM
- BAL - BALANCE
- CH - CHANNEL
- CP - CAST IN PLACE
- CJ - CONTROL JOINT
- CL - CENTERLINE
- CL - CLEAR
- CMU - CONCRETE MASONRY UNIT
- COL - COLUMN
- CONC - CONCRETE
- CONT - CONTIGUOUS
- DBL - DOUBLE
- DTL - DETAIL
- Ø - DIAMETER
- DM - DIMENSION
- DN - DOWN
- DWG - DRAWING
- EA - EACH
- EF - EACH FACE
- EJ - EXPANSION JOINT
- EL - ELEVATION
- ELEV - ELEVATOR
- EQ - EQUAL
- EW - EACH WAY
- EPC - EPOXY COATED RENF
- (E) - EXISTING
- EXP - EXPANSION
- EE - EACH END
- FF - FINISH FLOOR
- FND - FOUNDATION
- FS - FAR SIDE
- FT - FOOT
- FTG - FOOTING
- FL - FULL LENGTH
- GA - GAGE
- GALV - GALVANIZED
- HORIZ - HORIZONTAL
- H - HIGH
- INFO - INFORMATION
- INT - INTERIOR
- JT - JOINT
- CJ - CONSTRUCTION JOINT
- L - ANGLE
- LW - LONG WAY
- LE - LEFT END
- MAX - MAXIMUM
- MECH - MECHANICAL
- MTL - METAL
- MIN - MINIMUM
- MISC - MISCELLANEOUS
- (N) - NEW
- NS - NEAR SIDE
- NTS - NOT TO SCALE
- OC - ON CENTER
- OPNG - OPENING
- PL - PLATE
- PLF - POUNDS PER LINEAR FOOT
- PSF - POUNDS PER SQUARE FOOT
- PSI - POUNDS PER SQUARE INCH
- PT - PRESURE TREATED
- R - RADIUS
- RENF - REINFORCING
- REQD - REQUIRED
- SCHED - SCHEDULE
- SECT - SECTION
- SM - SIMILAR
- SQ - SQUARE
- STD - STANDARD
- STL - STEEL
- STRUCT - STRUCTURAL
- T/O - TOP OF
- T/S - TOP OF SLAB
- T/ - TOP
- TEMP - TEMPERATURE
- T/S - TOP OF STEEL
- TYP - TYPICAL
- UNO - UNLESS NOTED OTHERWISE
- VERT - VERTICAL
- W/ - WITH
- WWF - WELDED WIRE FABRIC

# PROJECT LOCATION



**NOTE:** SITE PLAN DOES NOT CONSTITUTE A SURVEY. A LICENSED SURVEYOR SHALL SET ALL CORNER PINS AND VERIFY FINISHED FLOOR ELEVATION PRIOR TO CONSTRUCTION.

**NOTE:** FINISH FLOOR ELEVATION (NAVD) (MINIMUM IS FLOOR + 6" OR 4" ABOVE CROWN OF THE ROAD) PER SURVEY BY OTHERS.



## DRAWING INDEX

SHEET #	SHEET DESCRIPTION
C5	COVER SHEET
A1	GENERAL NOTES
A2	GENERAL NOTES
A3	FOUNDATION PLAN
A4	FLOOR PLAN
A5	REFLECTED CEILING PLAN
A6	SECTION PLAN
A7	ELEVATIONS
A8	ELEVATIONS
A9	FRAMING PLAN
E1	ELECTRICAL NOTES
E2	ELECTRICAL PLAN

## DESIGN PARAMETERS

### APPLICABLE CODES:

- 7TH EDITION 2020 FLORIDA BUILDING CODE RESIDENTIAL
- 7TH EDITION 2020 FLORIDA BUILDING CODE MECHANICAL
- 2017 NEC ELECTRICAL CODE
- 7TH EDITION 2020 LIFE SAFETY CODE (NFPA 101 Life Safety Code)
- 2018 FLORIDA FIRE PREVENTION CODE 6th ADDITION
- 7TH EDITION 2020 ACCESSIBILITY CODE
- 7TH EDITION 2020 FLORIDA BUILDING CODE ENERGY CONSERVATION

### BASIC WIND SPEED:

- 60 MPH (3-SECOND GUST) - 25 MPH (FASTEST MILE)
- 80 MPH (3-SECOND GUST) - 16 MPH (FASTEST MILE)
- 140 MPH (3-SECOND GUST) - 128 MPH (FASTEST MILE)

### IMPORTANCE FACTOR:

- 0.77 (BUILDING CATEGORY II)
- 1.00 (BUILDING CATEGORY III)
- 1.15 (BUILDING CATEGORY II)
- 1.15 (BUILDING CATEGORY IV)

### BUILDING OCCUPANCY CLASSIFICATION:

- GROUP A - ASSEMBLY
- GROUP B - BUSINESS
- GROUP D - DAY CARE CENTER
- GROUP E - EDUCATIONAL
- GROUP F - FACTORY INDUSTRIAL
- GROUP H - HAZARDOUS
- GROUP I - INSTITUTIONAL
- GROUP M - MERCANTILE
- GROUP R - RESIDENTIAL
- GROUP S - STORAGE
- GROUP U - UTILITY/MISC.

### BUILDING CONSTRUCTION TYPE:

- TYPE I
- TYPE I-B
- TYPE II
- TYPE IV
- TYPE V-B

### EXPOSURE CATEGORY:

- A
- B
- C
- D

### WINDBORNE DEBRIS REGION:

- NO
- YES
- IMPACT RESISTANT GLAZING
- IMPACT RESISTANT COVERING COMBINATION OF IMPACT RESISTANT GLAZING / COVERING

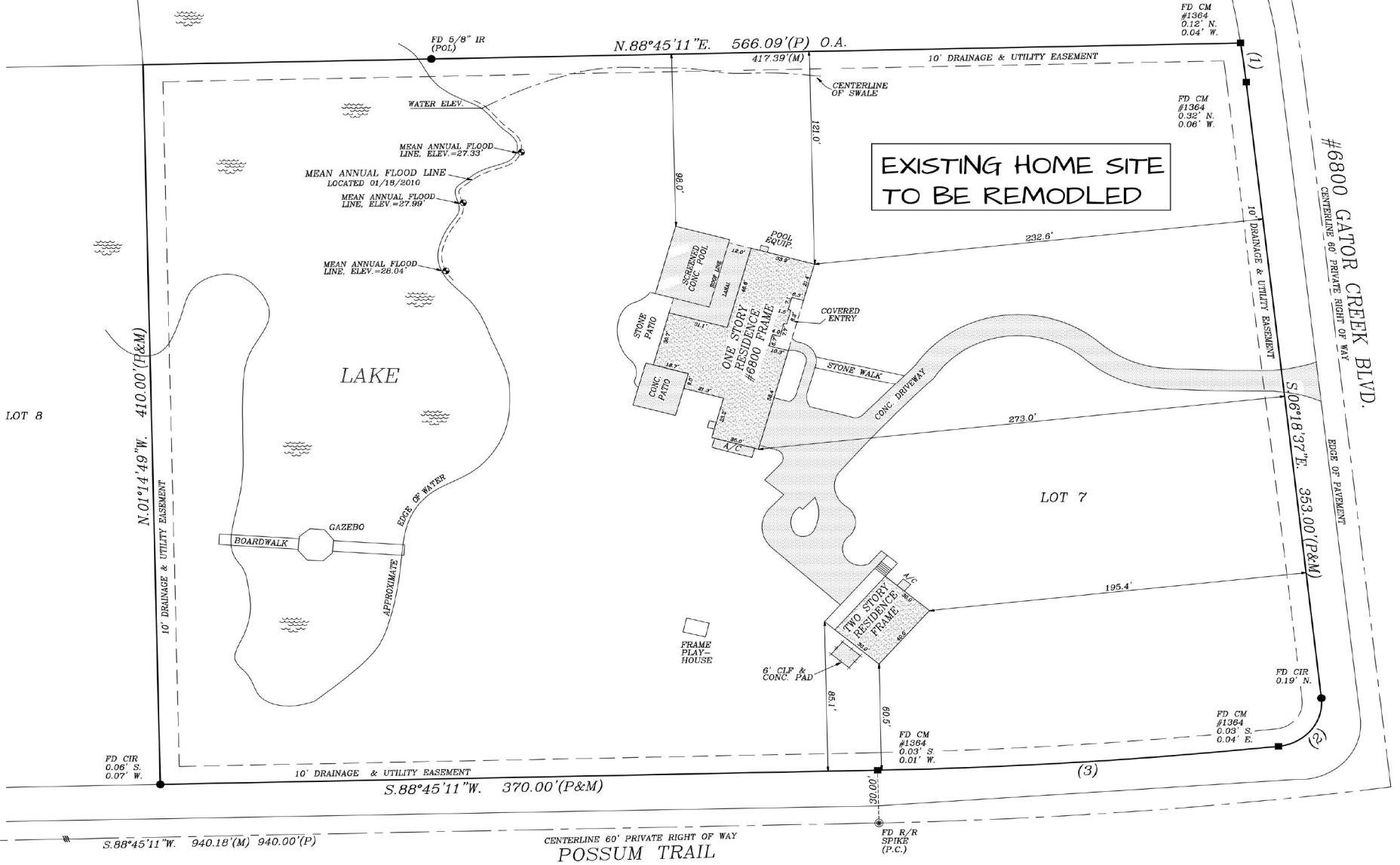
### INTERNAL PRESSURE COEFFICIENTS:

- 0.00 (OPEN)
- + 0.18, -0.18 (ENCLOSED)
- + 0.55, -0.55 (PARTIALLY ENCLOSED)

### NOTES:

LOT 9

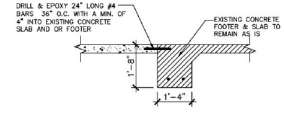
LOT 6



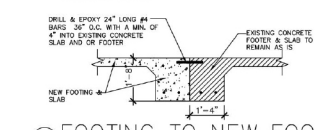
**FLOOD DATA:**

COMMUNITY NO. 125144  
PANEL NO. 0170D  
FLOOD ZONE: "C"  
REVISED: 5/1/84

FLOOD DATA TO BE VERIFIED  
AT COUNTY F.E.M.A. FLOOD  
CONTROL OFFICE.



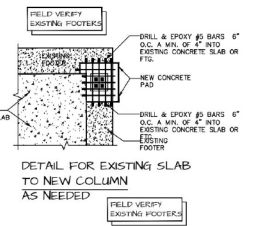
**A) EXISTING FOOTING TO NEW SLAB DETAIL**  
SCALE : N.T.S.



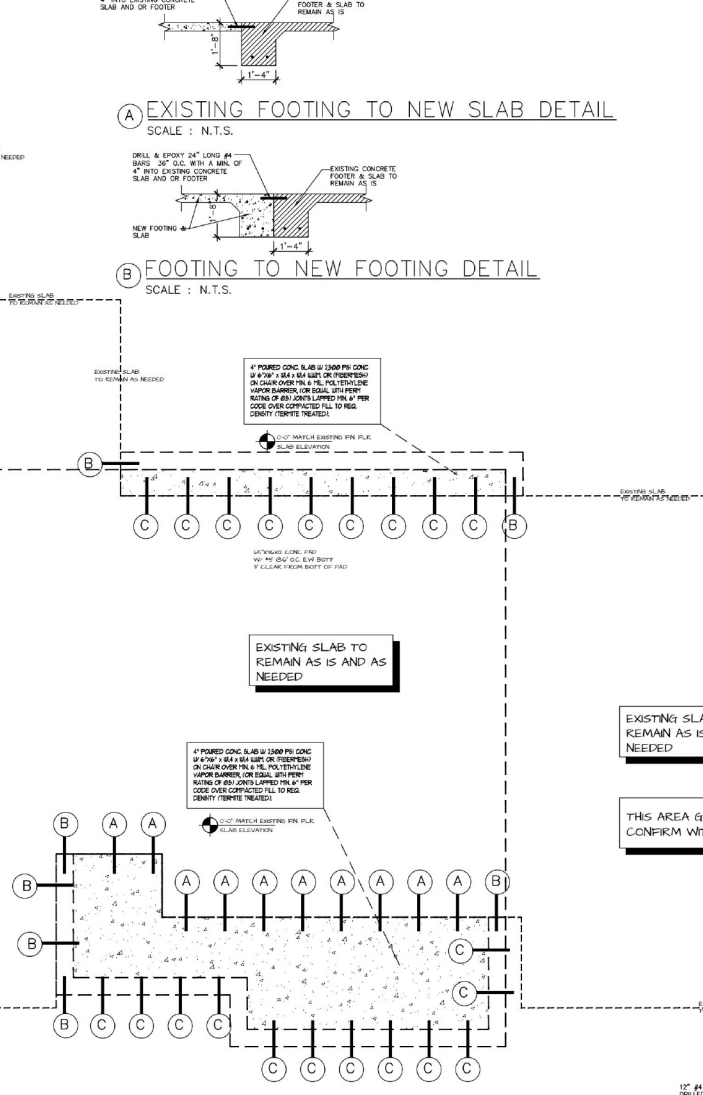
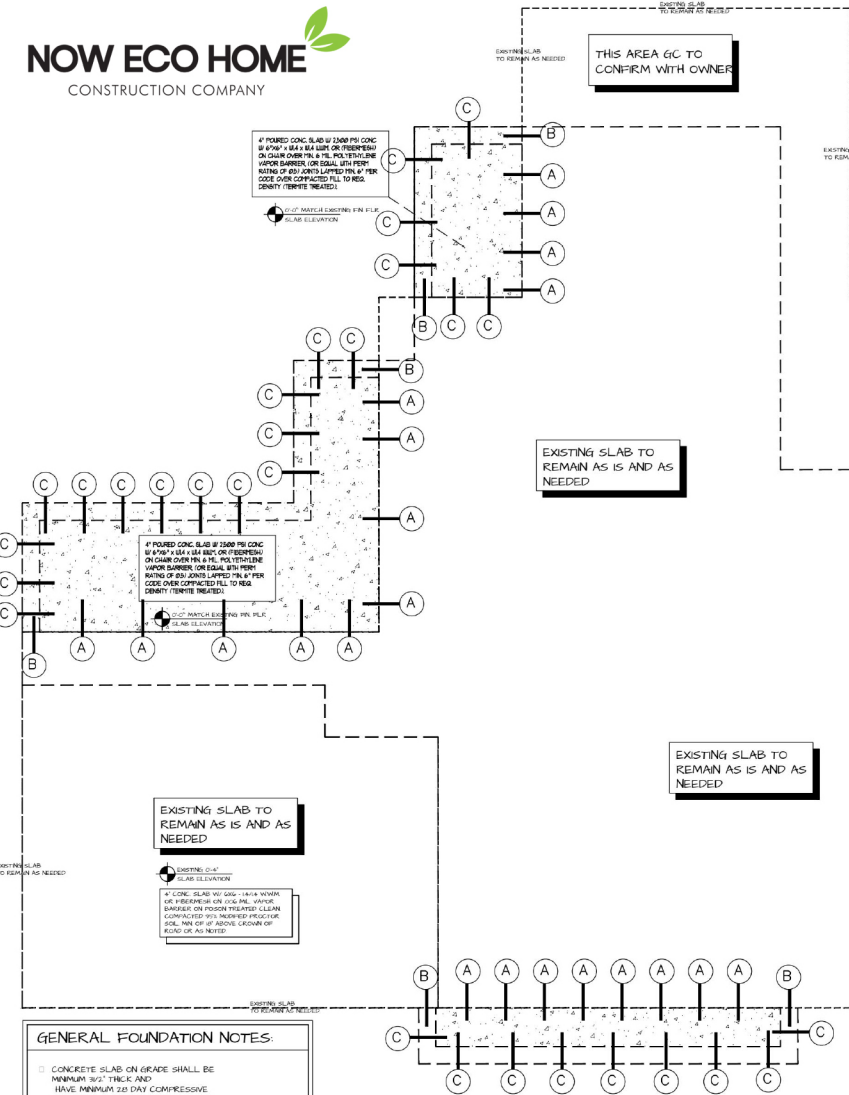
**B) FOOTING TO NEW FOOTING DETAIL**  
SCALE : N.T.S.

**MINIMUM SOIL CONDITION REQUIREMENTS:**

- BEARING MATERIAL: FOUNDATION CAN BE PLACED ON COMPACTED SUITABLE MATERIAL.
- BEARING SOIL AFTER COMPACTION SHALL EXHIBIT DENSITIES EQUIVALENT TO AT LEAST 95% OF THE MODIFIED PROCTOR MAX. DRY DENSITY
- BEARING DEPTH: CONTINUOUS WALL FOOTING SHALL BEAR AT LEAST 20" BELOW THE LOWEST ADJACENT GRADE.
- BEARING PRESSURE: THE MINIMUM ALLOWABLE SOIL PRESSURE SHALL BE 2000 PSI.
- POURED FOOTING FOR COLUMNS AND WALLS IN SAME MASS OF CONC. DO NOT USE DOUBLE FOOTING.
- NOTE: ALL PLUMBING FIXTURE DRAIN LOCATION ARE APPROXIMATE
- CONTRACTOR SHALL COORDINATE LOCATIONS WITH PLUMBING CONTRACTOR AND WITH SELECTED MODELS MANUFACTURER.
- FOR ADDITIONAL DIMENSIONS SEE ARCHITECTURAL DRAWINGS.
- COORDINATE WINDOWS AND DOORS OPENINGS WITH ARCHITECTURAL DRAWINGS.
- REINFORCED CHALK BOSS CELL ON BOTH SIDES OF ALL OPENINGS (SEE FOUNDATION PLAN AND DETAILS)
- ALL FOOTINGS 3000 PSI (MIN)
- SLAB CONTROL JOINTS PER CONTRACTOR
- DWELLING SHALL BE PROVIDED WITH A MEANS OF EGRESS IN ACCORDANCE WITH THIS SECTION R311. THE MEANS OF EGRESS SHALL PROVIDE A CONTINUOUS AND UNOBSTRUCTED PATH OR VERTICAL AND HORIZONTAL EGRESS TRAVEL FROM ALL PORTION OF THE DWELLING TO THE REQUIRED EGRESS DOOR WITHOUT REQUIRING TRAVEL THROUGH A GARAGE. THE REQUIRED EGRESS DOOR SHALL OPEN DIRECTLY INTO A PUBLIC WAY OR TO YARD OR COURT THAT OPENS TO A PUBLIC WAY. 2020 FBC-RESIDENTIAL, SEVENTH EDITION R311.1
- NOT LESS THAN ONE EGRESS DOOR SHALL BE PROVIDED FOR EACH DWELLING UNIT. THE EGRESS DOOR SHALL BE SIDE-HINGED, AND SHALL PROVIDE A CLEAR WIDTH OF NOT LESS THAN 32 INCHES WHERE MEASURED BETWEEN THE FACE OF THE DOOR AND THE STOP, WITH THE DOOR OPEN 90 DEGREES. THE CLEAR HEIGHT OF THE OPENING SHALL NOT BE LESS THAN 78" IN HEIGHT MEASURED FROM THE TOP OF THE THRESHOLD TO THE BOTTOM OF THE STOP. OTHER DOORS SHALL NOT BE REQUIRED TO COMPLY WITH THESE MINIMUM DIMENSIONS; EGRESS DOORS SHALL BE READILY OPENABLE FROM INSIDE THE DWELLING WITHOUT THE USE OF A KEY OR SPECIAL KNOWLEDGE OR EFFORT. 2020 FBC-RESIDENTIAL, SEVENTH EDITION R311.2
- THERE SHALL BE A LANDING OR FLOOR ON EACH SIDE OF EACH EXTERIOR DOOR. THE WIDTH OF EACH LANDING SHALL BE NOT LESS THAN THE DOOR SERVED. EVERY LANDING SHALL HAVE A DIMENSION OF NOT LESS THAN 36 INCHES MEASURED IN THE DIRECTION OF TRAVEL. THE SLOPE AT EXTERIOR LANDINGS SHALL NOT EXCEED 1/4 UNIT VERTICAL IN 12 UNITS HORIZONTAL (2 PERCENT). 2020 FBC-RESIDENTIAL, SEVENTH EDITION R311.3.1
- LANDINGS OR FINISHED FLOORS AT THE REQUIRED EGRESS DOOR SHALL BE NOT MORE THAN 1 1/2 INCHES (38 mm) LOWER THAN THE TOP OF THE THRESHOLD. 2020 FBC-RESIDENTIAL, SEVENTH EDITION R311.3.1
- DOORS OTHER THAN THE REQUIRED EGRESS DOOR SHALL BE PROVIDED WITH LANDINGS OR FLOORS NOT MORE THAN 7 3/4 INCHES (196 mm) BELOW THE TOP OF THE THRESHOLD. 2020 FBC-RESIDENTIAL, SEVENTH EDITION R311.3.2
- EXCEPTION: A FOUR LANDING IS NOT REQUIRED WHERE A STAIRWAY OF NOT MORE THAN TWO RISERS IS LOCATED ON THE EXTERIOR SIDE OF THE DOOR.



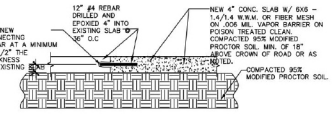
**DETAIL FOR EXISTING SLAB TO NEW COLUMN AS NEEDED**



**EXISTING SLAB TO REMAIN AS IS AND AS NEEDED**

**THIS AREA GC TO CONFIRM WITH OWNER**

**C) NEW SLAB TO EXISTING SLAB DETAIL**  
SCALE : N.T.S.



**GENERAL FOUNDATION NOTES:**

- CONCRETE SLAB ON GRADE SHALL BE MINIMUM 3/2" THICK AND HAVE MINIMUM 28 DAY COMPRESSIVE STRENGTH OF 3000 PSI (MIN)
- EARTH AND EARTH FILL SUPPORTING SLABS ON GRADE IS ASSUMED TO HAVE A MINIMUM BEARING CAPACITY OF 2000 PSF AND SHALL BE FREE OF ORGANIC MATERIAL AND COHESIVE SOILS. COMPACT THE FILL IN 4" LIFTS TO AT LEAST 95% OF MODIFIED PROCTOR MAXIMUM DRY DENSITY. IT IS THE OWNER'S OR CONTRACTOR'S RESPONSIBILITY TO CONFIRM THESE ASSUMPTIONS.
- IF CONTRACTOR OR BULLING OFFICIAL DETERMINES THAT THE SOIL IS NOT SUITABLE FOR 2,000 PSF BEARING CAPACITY CONTACT SOIL ADDITIONAL FOUNDATION WORK MAY BE REQUIRED.
- SLIDING GLASS DOOR FRAMES MUST BE RECESSED INTO THE SLAB IN ACCORDANCE WITH THE BUILDING CODE CONSULT ARCHITECTURAL PLANS FOR LOCATION OF SLIDING GLASS DOORS.
- MASONRY STEMWALL AND MONOLITHIC FOOTINGS ARE INTERCHANGEABLE. SEE SHEET ST-2D FOR INTERCHANGEABLE STEMWALL & MONOLITHIC SECTIONS (DETAILS V2 & V2-7)
- 24" LONG #4 BAR IS RECOMMENDED TO BE INSTALLED AT ALL EXTERIOR CORNERS. SEE 'EXTERIOR CORNER DETAIL' ON SHEET ST-2D.

**NOTES**  
CONTRACTOR SHALL VERIFY ALL WOOD & MASONRY OPENINGS FOR WINDOWS & DOORS WITH MANUFACTURERS REGULATIONS.

**EXISTING CONDITION TO NEW AREA OF SLAB AND FOOTERS**  
AS NEEDED GC TO CONFIRM FIELD CONDITIONS